



Douglasdale Business Park

207, 11505 35 Street SE | Calgary, AB

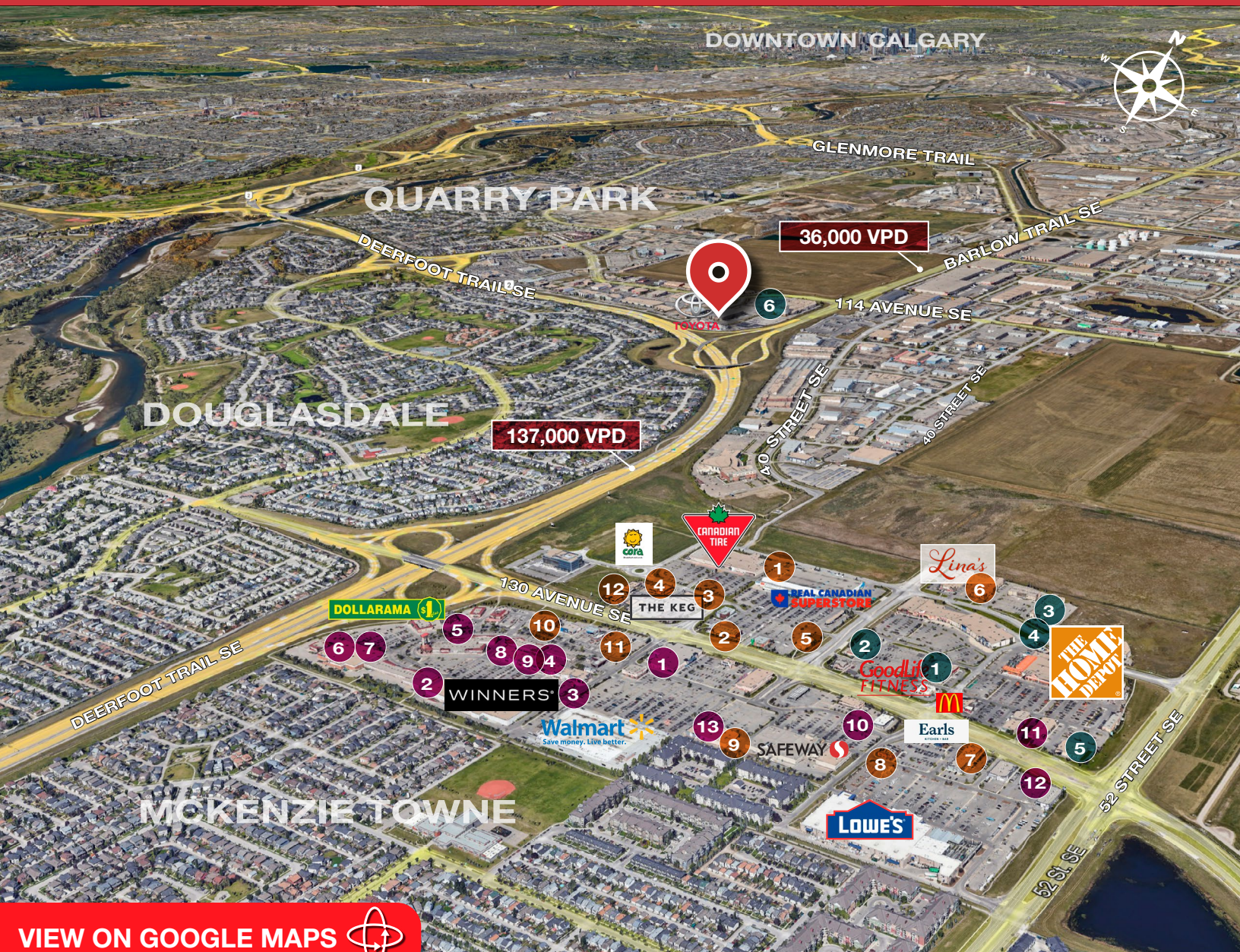
PROPERTY HIGHLIGHTS

- » Second Floor Office Suites available for lease
- » Suites starting at 1,328 sq. ft.
- » Ideally located with easy access to Deerfoot Trail, Barlow Trail and Stoney Trail
- » Developed, owned and managed by Telsec Property Corporation

SPACE DETAILS

AVAILABLE AREA	1,328 SF
NET MONTHLY RENT	Market
OP COST & PROPERTY TAX	\$8.10 PSF
LEASE TERM	5 year
PARKING	3 assigned (street parking available)
ZONING	I-B
Available	June 1, 2024

FOR LEASE | 207, 11505 35 STREET SE



SHEPARD CENTRE & SOUTH TRAIL CROSSING



Food, Drinks & Market

1. Bento Sushi
2. Costa Vida
3. The Burger's Priest
4. Karma Fine Indian Cuisine
5. Montana's
6. Lina's, Italian Supermercato
7. Five Guys
8. Toad 'n' Turtle Pubhouse & Grill
9. South St. Burger
10. Boston Pizza
11. Calavera Cantina
12. Kiro Sushi



Lifestyle & Recreation

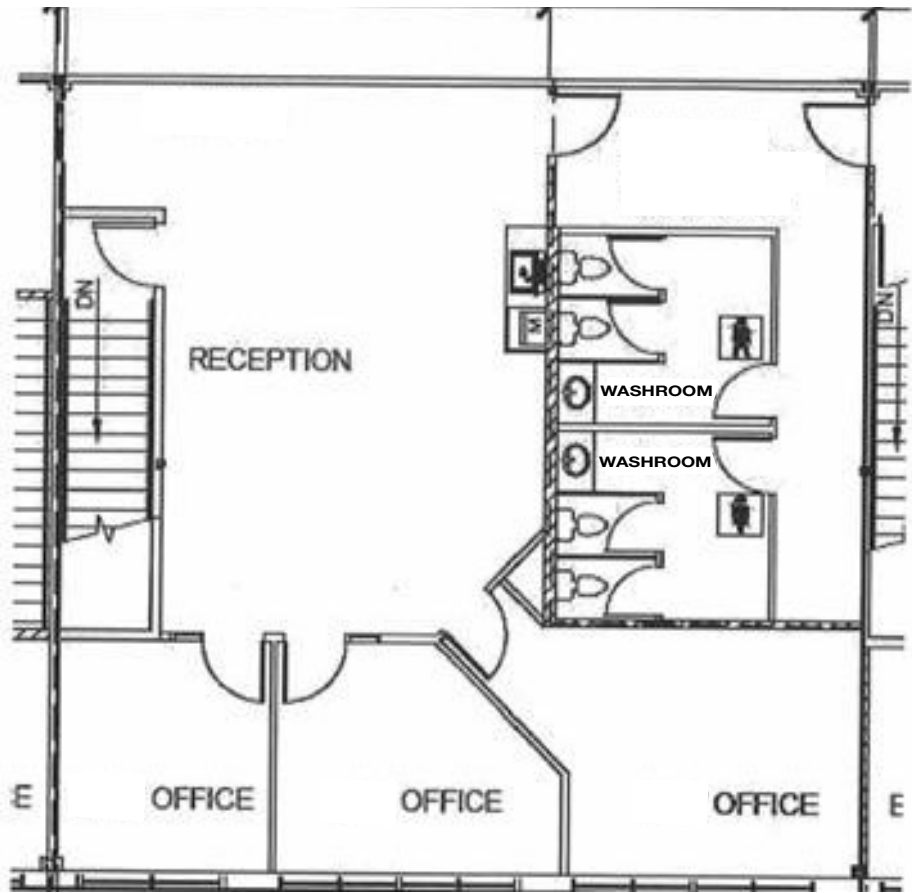
1. GoodLife Fitness Calgary
2. Club Pilates
3. Soul Hot Yoga Inc
4. Ultimate Dance Company
5. Massage Heights Shepard Regional
6. Deerfoot Inn & Casino



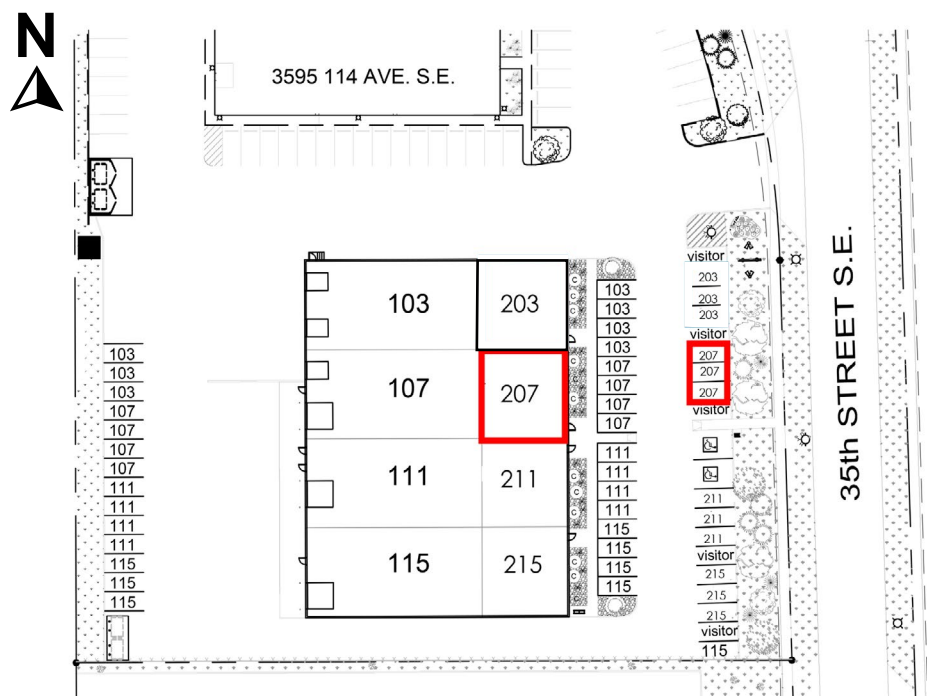
Shopping

1. London Drugs
2. Staples
3. Sport Chek
4. Crystal Glass Canada Ltd
5. Sherwin-Williams Paint Store
6. Marshalls
7. HomeSense
8. PetSmart
9. Mastermind Toys
10. Petland South Trail
11. The Brick Mattress Store
12. Structube
13. Mark's

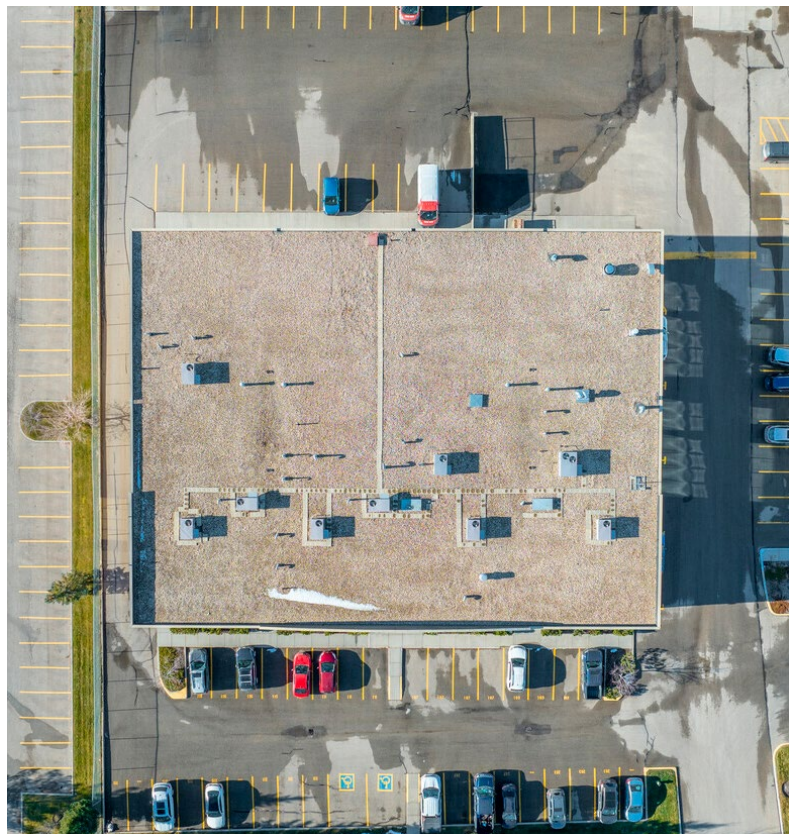
FLOOR PLAN



SITE PLAN



FOR LEASE | 207, 11505 35 STREET SE



Kaile Landry

Associate

klandry@naiadvent.com

(403) 669-3050

Jennifer Myles

Associate

jmyles@naiadvent.com

(403) 975-2616

Brody Butchart

Senior Associate

bbutchart@naiadvent.com

(403) 389 7857

Jamie Coulter, SIOR

Vice President/Partner

jcoulter@naiadvent.com

(403) 835 1535

3633 8 Street SE
Calgary, AB T2G 3A5

+1 403 984 9800

naiadvent.com