



CROWFOOT 75

75 CROWFOOT RISE NW

FOR LEASE



PROPERTY HIGHLIGHTS

- 3,391 - 18,537 sq. ft. of Class "A" Office Space available for Lease
- 3 Storey, 54,000 sq. ft. building with large windows and balconies on each floor
- Tenant fitness facility onsite, fully equipped with lockers and showers
- Surface and underground parkade parking available
- Neighborhood amenities within 1km: Co-op, Safeway, Lowe's, Shoppers Drug Mart, Chapters, Macdonald's, Tim Hortons, The Keg Steakhouse & Bar and more
- Ideally located with easy access to Crowchild Trail, John Laurie Boulevard and Stoney Trail
- Developed and owned by Telsec Property Corporation

Lisa Ha
403-203-3882
lisa@telsec.ca

www.Telsec.ca

TELSEC PROPERTY CORPORATION



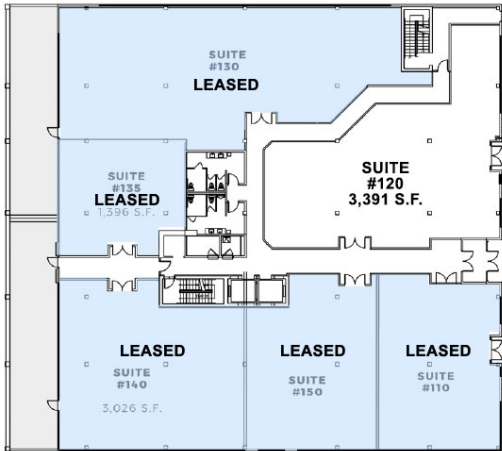


CROWFOOT 75

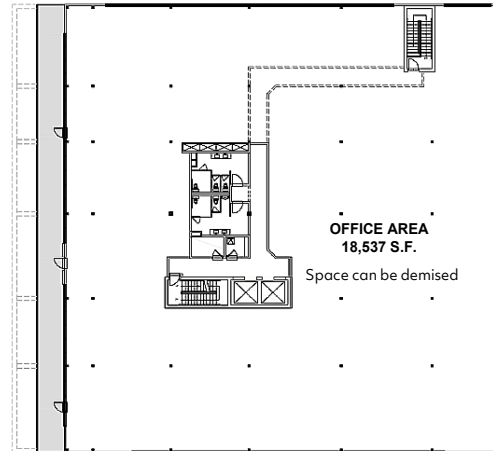
75 CROWFOOT RISE NW

FLOOR PLAN

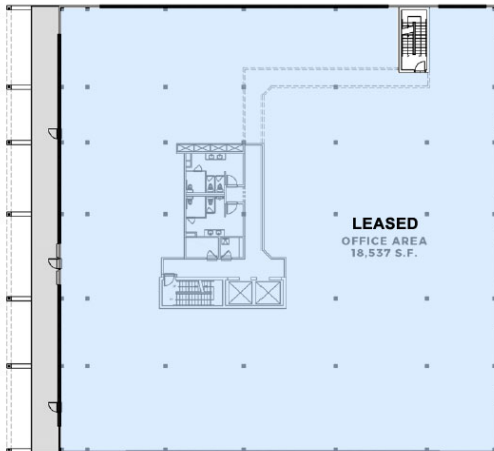
MAIN FLOOR



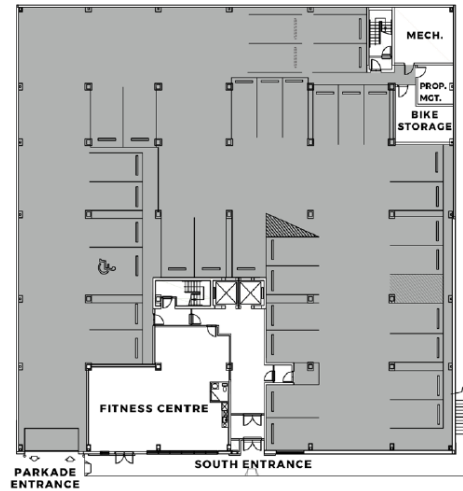
THIRD FLOOR



SECOND FLOOR



LOWER LEVEL & PARKADE



AVAILABLE AREA

3,391 - 18,537 sq. ft.

NET MONTHLY RENT

Market Rate

OPERATING COSTS & PROPERTY TAX

\$15.02 per sq. ft. (est for 2024)

Lisa Ha
403-203-3882
lisa@telsec.ca

www.Telsec.ca
TELSEC PROPERTY CORPORATION





CROWFOOT 75

75 CROWFOOT RISE NW



Lisa Ha
403-203-3882
lisa@telsec.ca

www.Telsec.ca
TELSEC PROPERTY CORPORATION

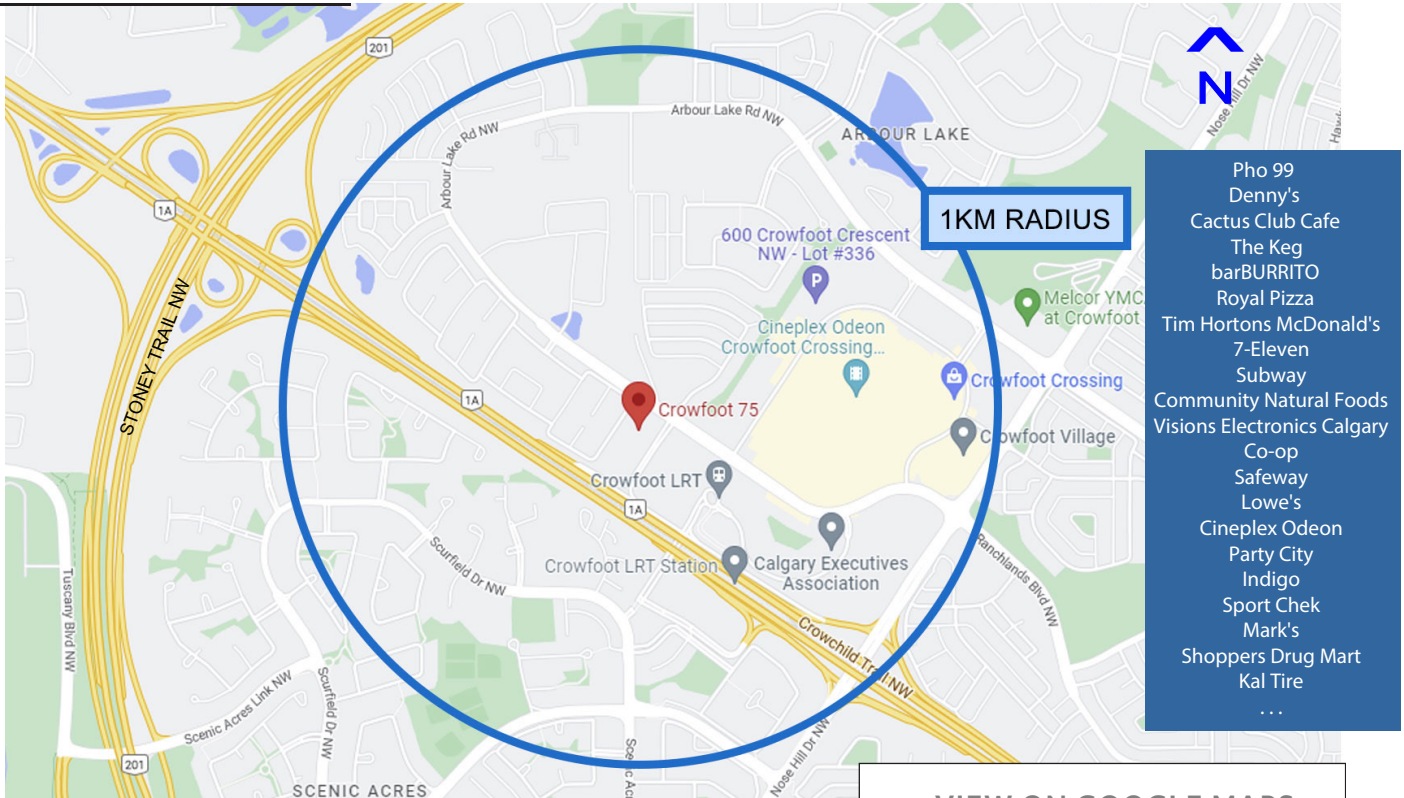




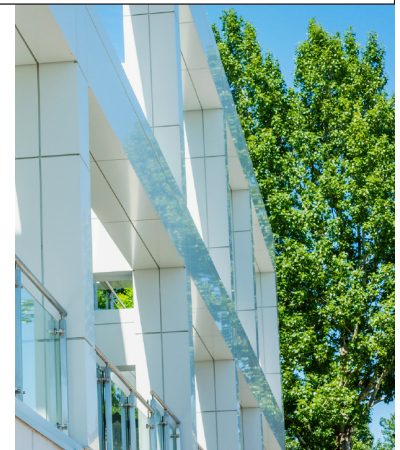
CROWFOOT 75

75 CROWFOOT RISE NW

LOCATION



[> VIEW ON GOOGLE MAPS](#)



Lisa Ha
 403-203-3882
 lisa@telsec.ca

www.Telsec.ca

TELSEC PROPERTY CORPORATION

