



9950 MACLEOD TRAIL SE

Prime Macleod Trail Retail

FOR LEASE



PROPERTY HIGHLIGHTS

- 1,000 - 3,015 sq. ft. of Retail for Lease
- Located north of Southcentre Mall and south of Southland Drive
- Direct access from Macleod Trail and Bonaventure Drive
- Anchored by Party City and Shaganappi Mediterranean Market
- Signage exposure to 75,000 vehicles per day (*City of Calgary traffic count*)
- Owned & managed by Telsec Property Corporation

Lisa Ha
403-203-3882
lisa@telsec.ca

www.Telsec.ca
TELSEC PROPERTY CORPORATION

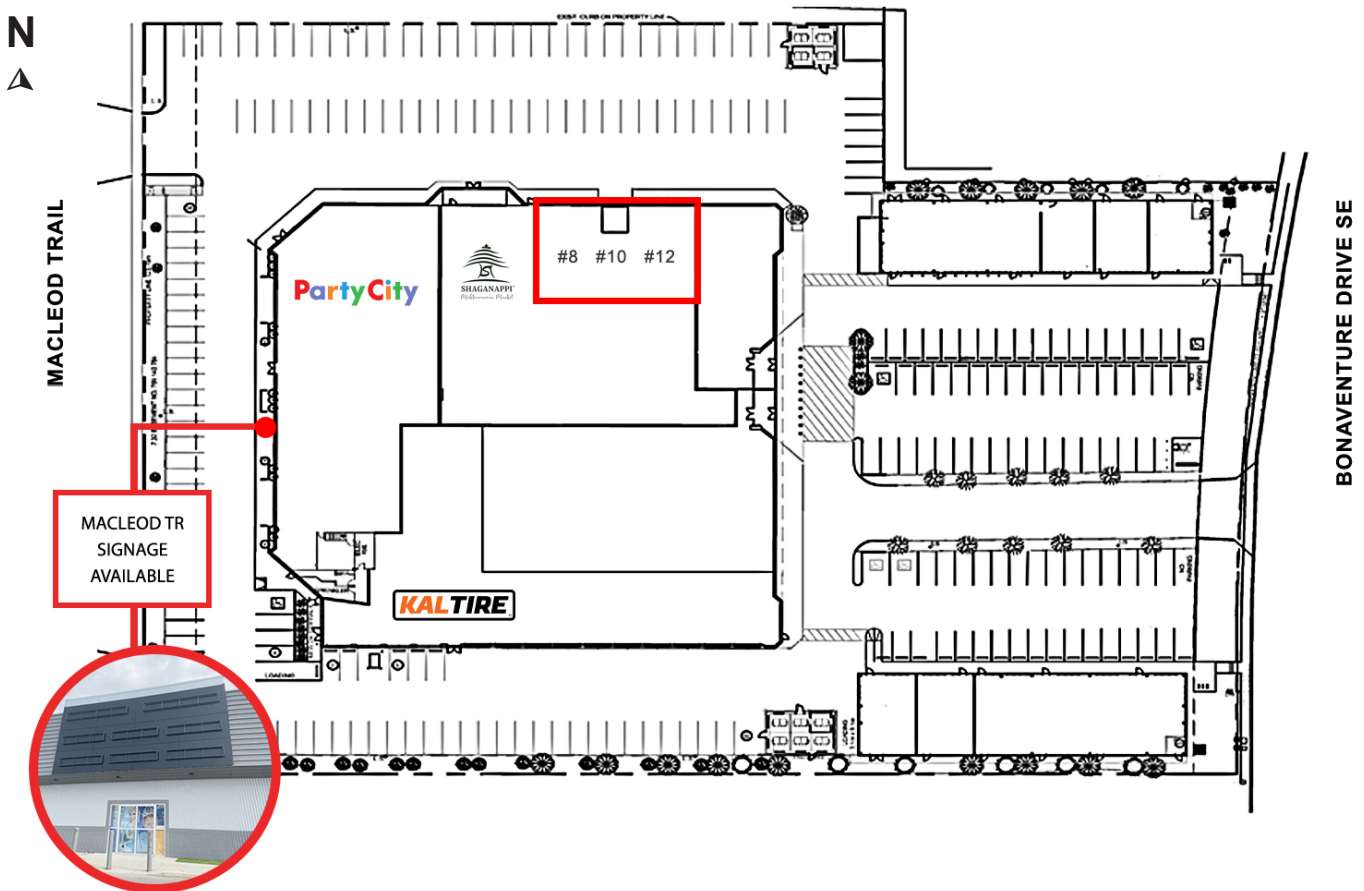




9950 MACLEOD TRAIL SE

Prime Macleod Trail Retail

SITE PLAN



AVAILABLE AREA	1,000 - 3,015 sq. ft.
NET MONTHLY RENT	\$36.00 per sq. ft.
OPERATING COSTS & PROPERTY TAX	\$17.25 per sq. ft. (est for 2023)
ZONING	Commercial - Corridor 3 C-COR3
SIGNAGE	Macleod Trail facing building fascia and Bonaventure Drive directory

**Size and dimensions are approximate and based on architectural drawings*

Lisa Ha
403-203-3882
lisa@telsec.ca

www.Telsec.ca
TELSEC PROPERTY CORPORATION

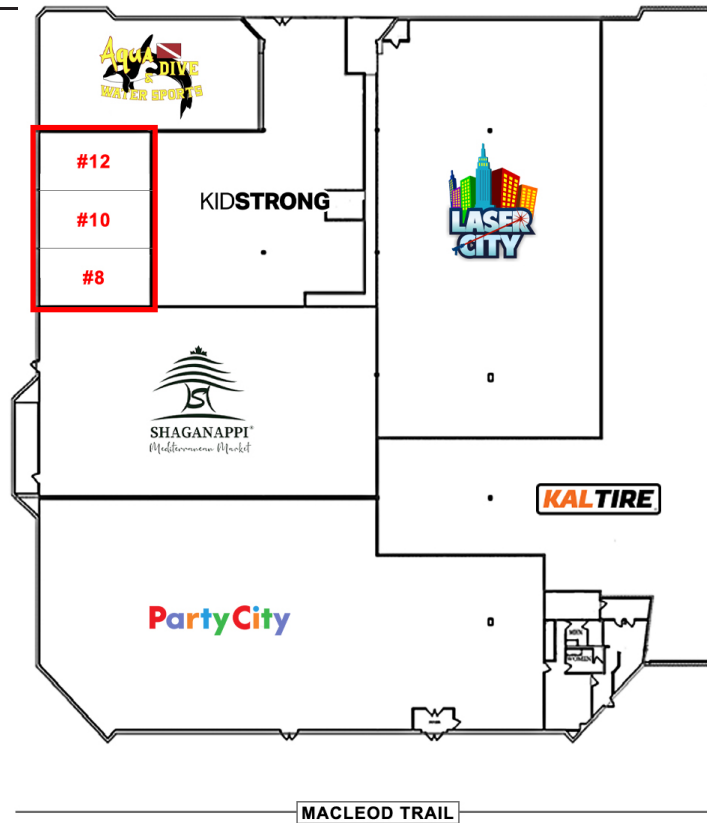




9950 MACLEOD TRAIL SE

Prime Macleod Trail Retail

FLOOR PLAN



Lisa Ha
403-203-3882
lisa@telsec.ca

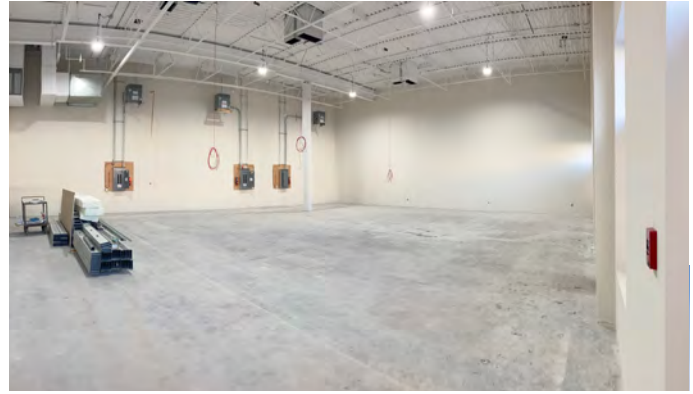
www.Telsec.ca
TELSEC PROPERTY CORPORATION



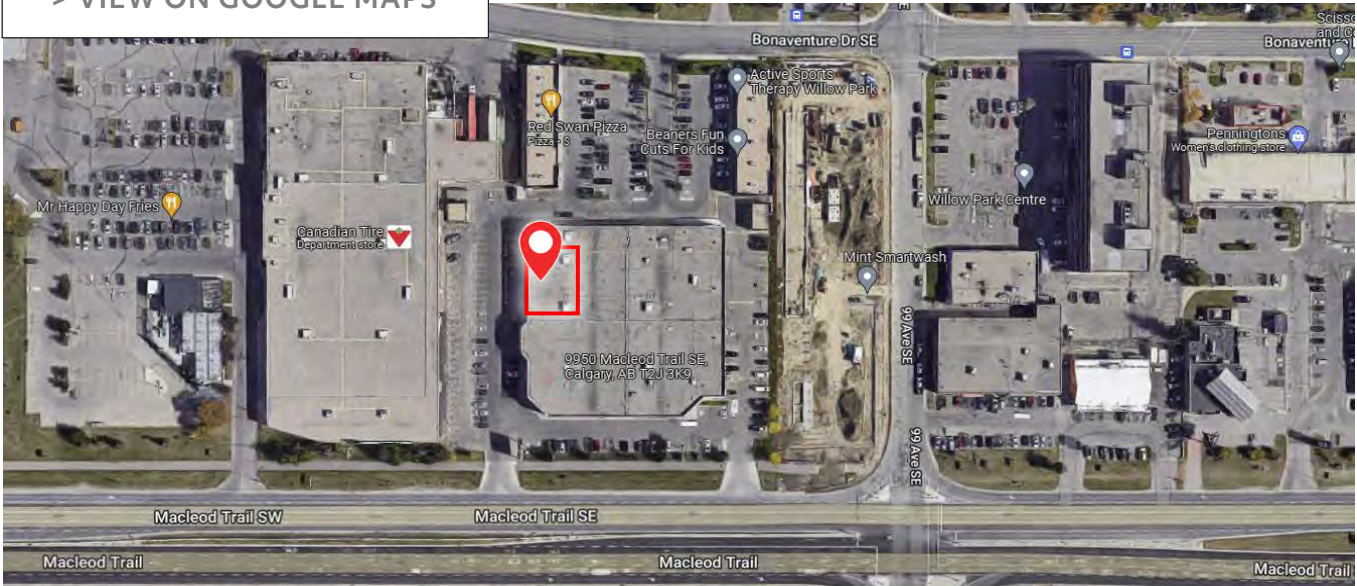


9950 MACLEOD TRAIL SE

Prime Macleod Trail Retail



[> VIEW ON GOOGLE MAPS](#)



Lisa Ha
403-203-3882
lisa@telsec.ca

www.Telsec.ca
TELSEC PROPERTY CORPORATION

