



HORTON ROAD

9715 HORTON ROAD SW

FOR LEASE

**Small Office Suites
Available Immediately**



PROPERTY HIGHLIGHTS

- Easy access to Southland Drive and Macleod Trail
- Newly Renovated Office space
- Flexible Lease Terms
- Utilities included in Operating Costs
- Owned and managed by Telsec Property Corporation

Lisa Ha
403-203-3882
lisa@telsec.ca

www.Telsec.ca
TELSEC PROPERTY CORPORATION





HORTON ROAD

9715 HORTON ROAD SW

MAIN FLOOR



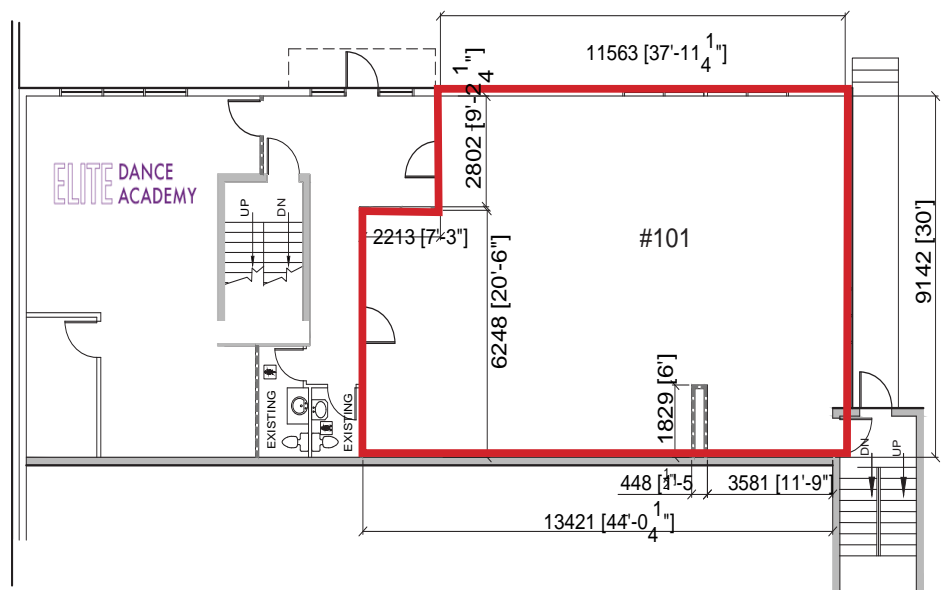
Suite #101

AVAILABLE AREA
1,594 sq. ft.

MONTHLY RENT GROSS
\$3,200

OPERATING COST
& PROPERTY TAX
\$8.49 per sq. ft.
(est for 2023)

PARKING
4 Available Spaces



Lisa Ha
403-203-3882
lisa@telsec.ca

www.Telsec.ca
TELSEC PROPERTY CORPORATION

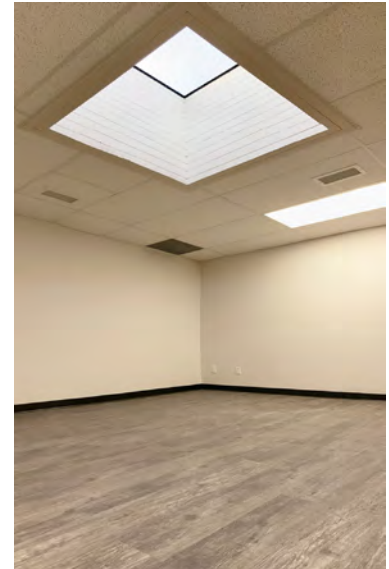




HORTON ROAD

9715 HORTON ROAD SW

MAIN FLOOR



AVAILABLE AREA

325 sq. ft.

MONTHLY RENT GROSS

\$650

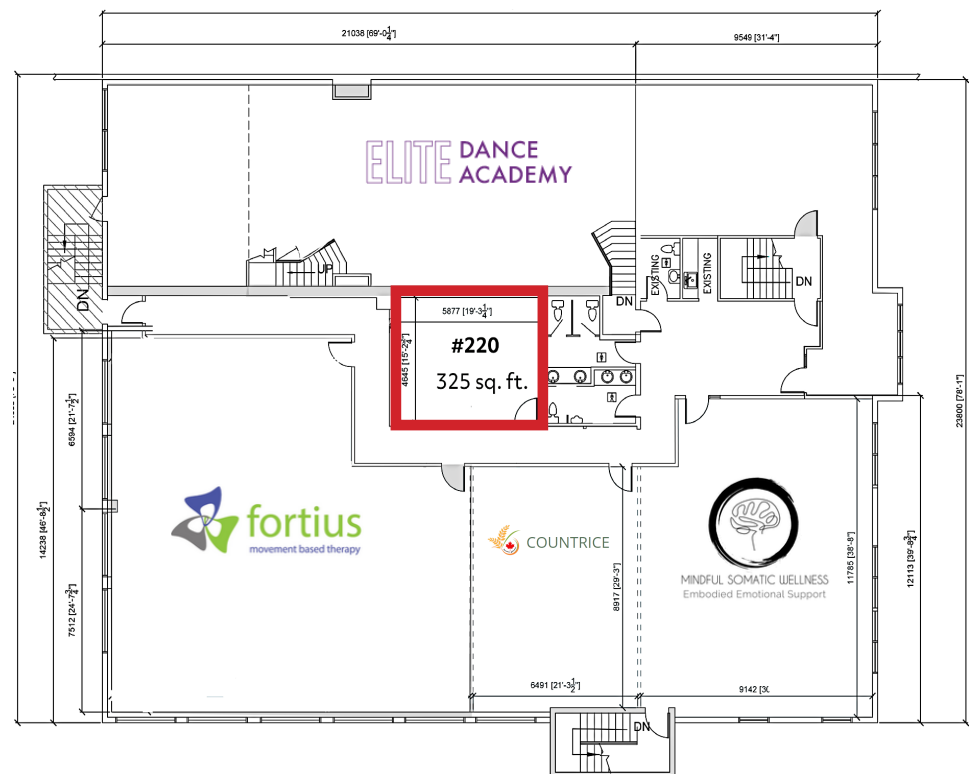
OPERATING COST & PROPERTY TAX

\$8.49 per sq. ft.

(est for 2023)

PARKING

1 Available Space



Lisa Ha

403-203-3882

lisa@telsec.ca

www.Telsec.ca

TELSEC PROPERTY CORPORATION

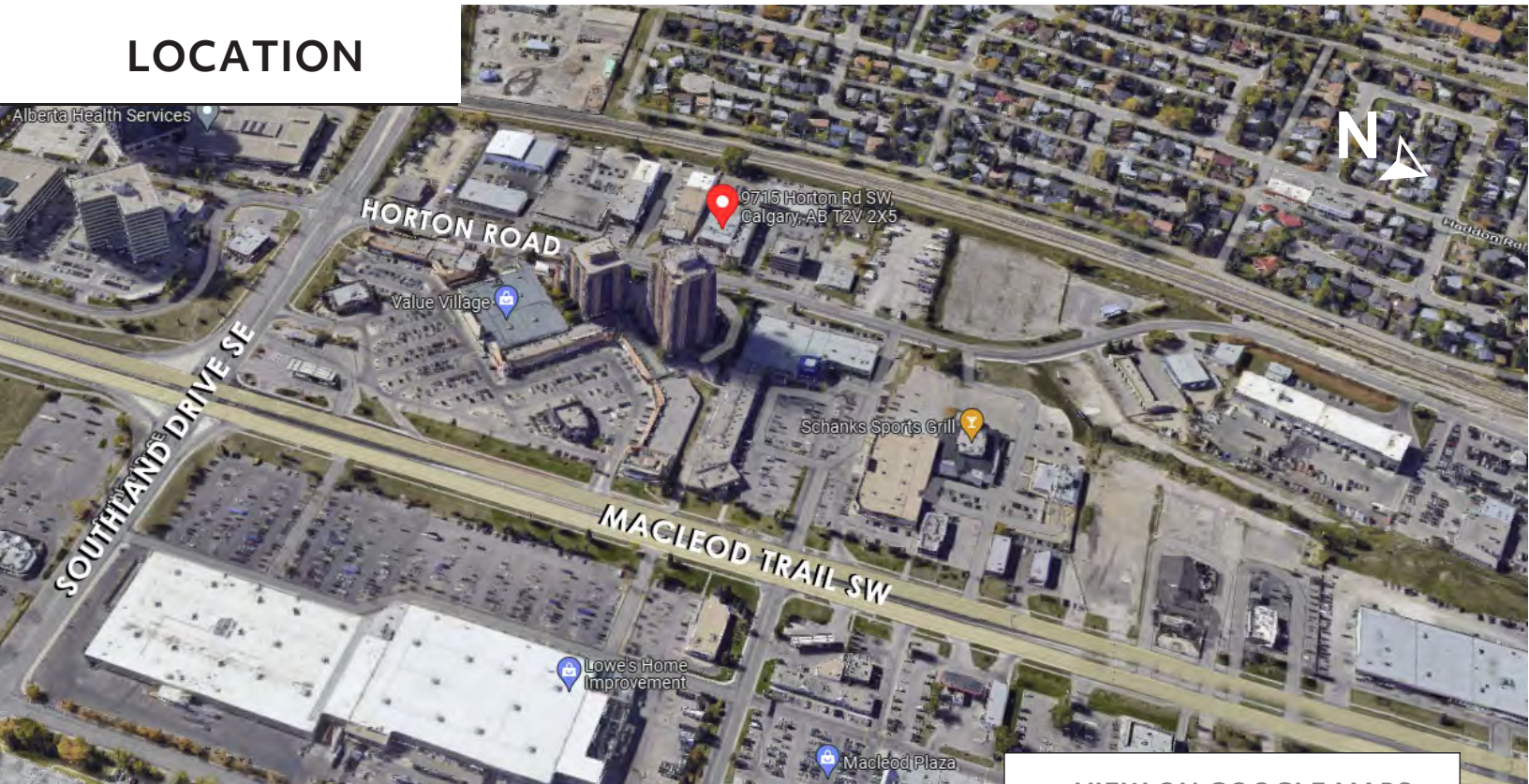




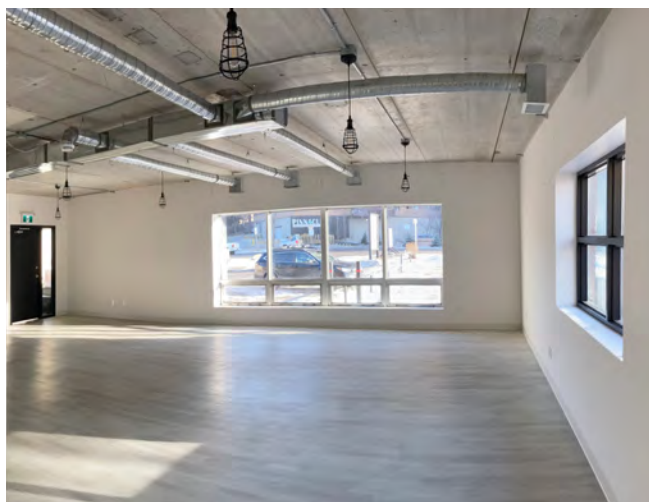
HORTON ROAD

9715 HORTON ROAD SW

LOCATION



> VIEW ON GOOGLE MAPS



Lisa Ha
403-203-3882
lisa@telsec.ca

www.Telsec.ca
TELSEC PROPERTY CORPORATION

