



HORTON ROAD

9715 HORTON ROAD SW

FOR LEASE

**Small Office Suites
Available Immediately**



PROPERTY HIGHLIGHTS

- Easy access to Southland Drive and Macleod Trail
- Newly Renovated Office space
- Flexible Lease Terms
- Owned and managed by Telsec Property Corporation

Lisa Ha
403-203-3882
lisa@telsec.ca

www.Telsec.ca
TELSEC PROPERTY CORPORATION





HORTON ROAD

9715 HORTON ROAD SW

MAIN FLOOR



Suite #101

AVAILABLE AREA

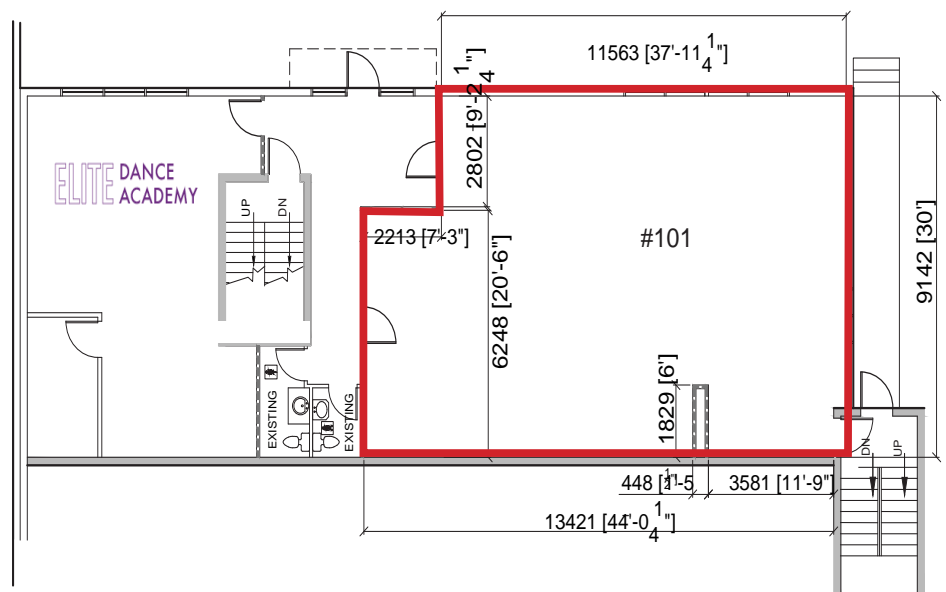
1,594 sq. ft.

MONTHLY RENT GROSS

\$3,200

PARKING

4 Available Spaces



Lisa Ha

403-203-3882

lisa@telsec.ca

www.Telsec.ca

TELSEC PROPERTY CORPORATION

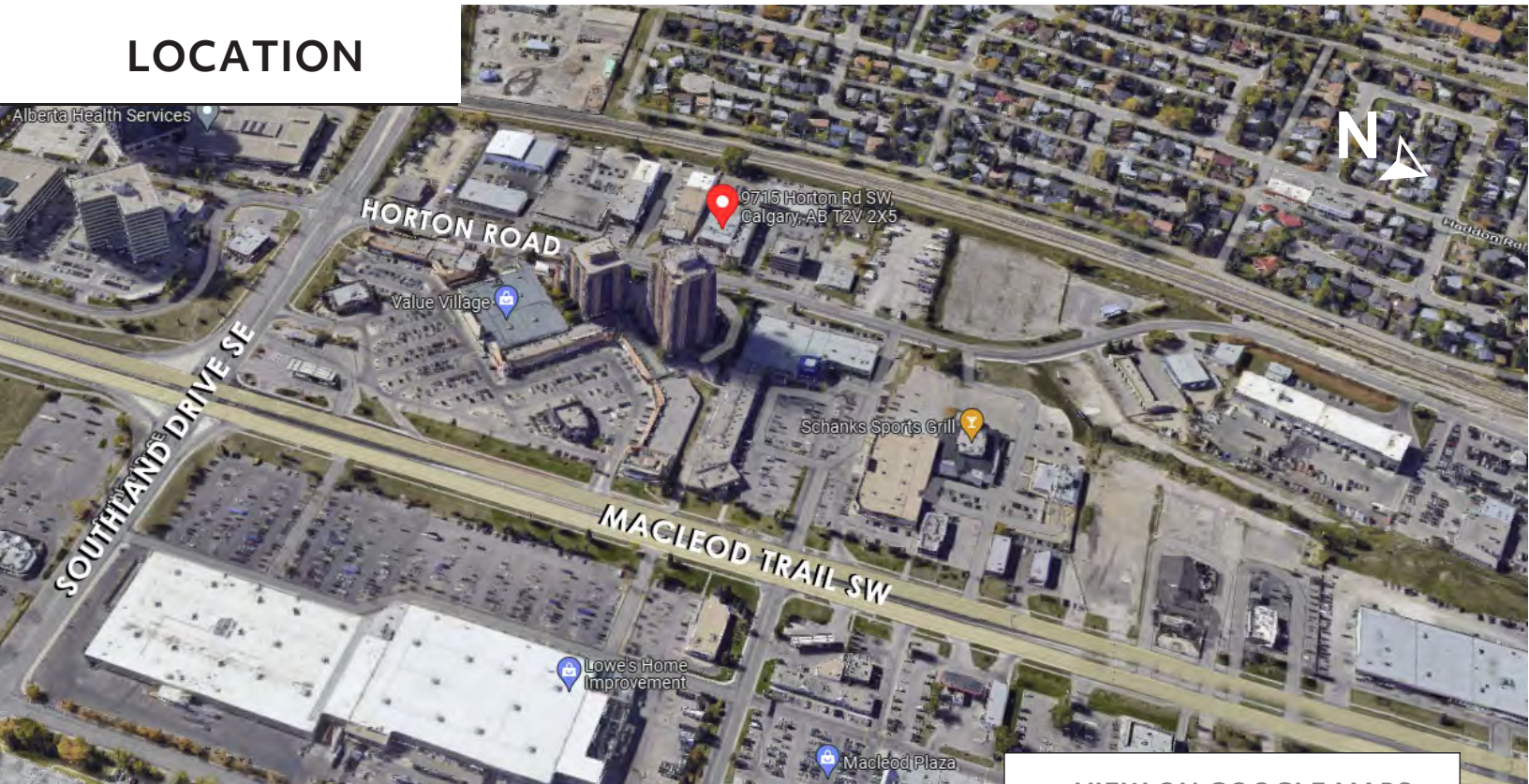




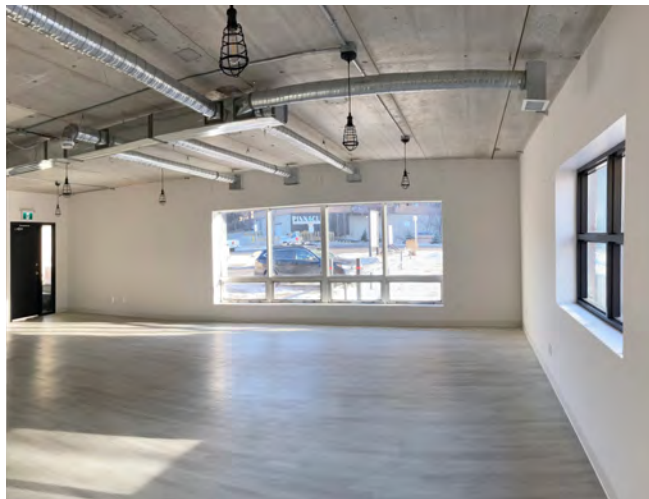
HORTON ROAD

9715 HORTON ROAD SW

LOCATION



> VIEW ON GOOGLE MAPS



Lisa Ha
403-203-3882
lisa@telsec.ca

www.Telsec.ca
TELSEC PROPERTY CORPORATION

