



# HORTON ROAD

9715 HORTON ROAD SW

**FOR LEASE**



## PROPERTY HIGHLIGHTS

- Main and second floor Office Suites available for lease
- Water and gas included in the operating cost
- Ideally located with easy access to Southland Drive and Macleod Trail
- Owned and managed by Telsec Property Corporation

**Lisa Ha**  
403-203-3882  
lisa@telsec.ca

[www.Telsec.ca](http://www.Telsec.ca)  
**TELSEC PROPERTY CORPORATION**

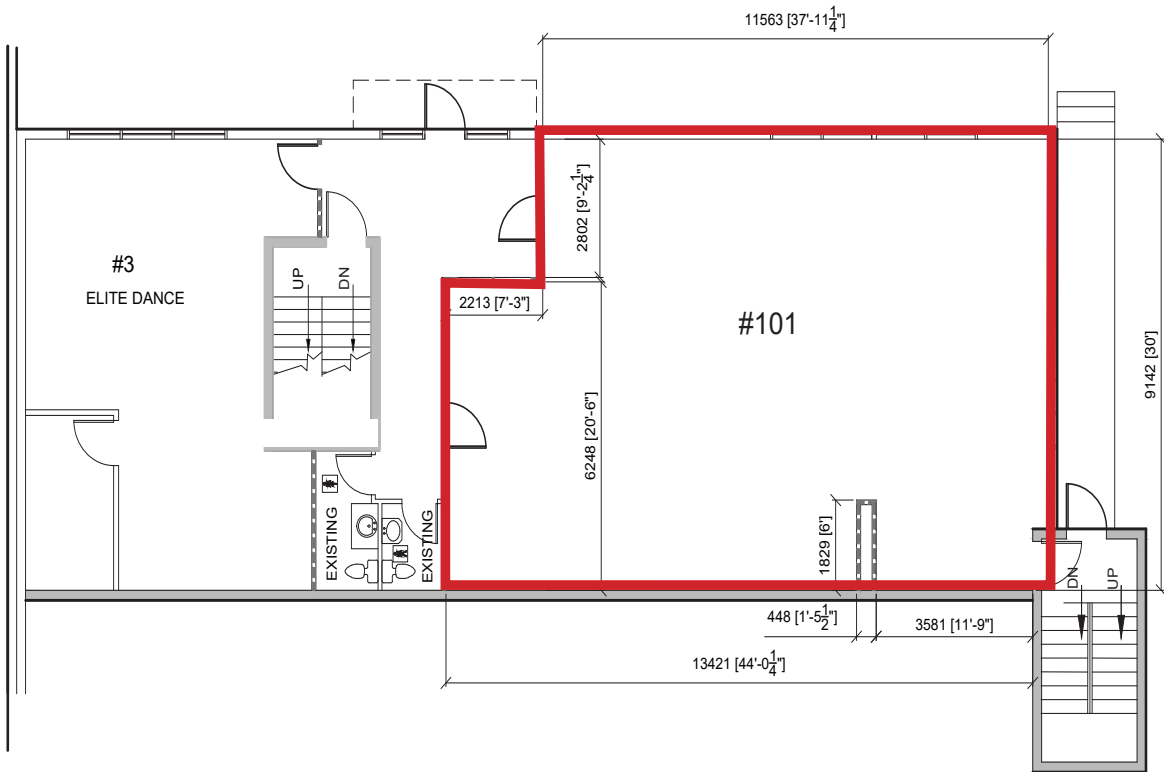




# HORTON ROAD

9715 HORTON ROAD SW

## MAIN FLOOR



### Suite #101 - 9715 HORTON ROAD

AVAILABLE AREA	1,594 sq. ft.
NET MONTHLY RENT	\$2,125.00 (\$16.00 a sq. ft.)
OPERATING COSTS & PROPERTY TAX	\$7.94 per sq. ft. (est for 2022)
PARKING	1:350 Ratio

Lisa Ha  
403-203-3882  
lisa@telsec.ca

www.Telsec.ca  
TELSEC PROPERTY CORPORATION

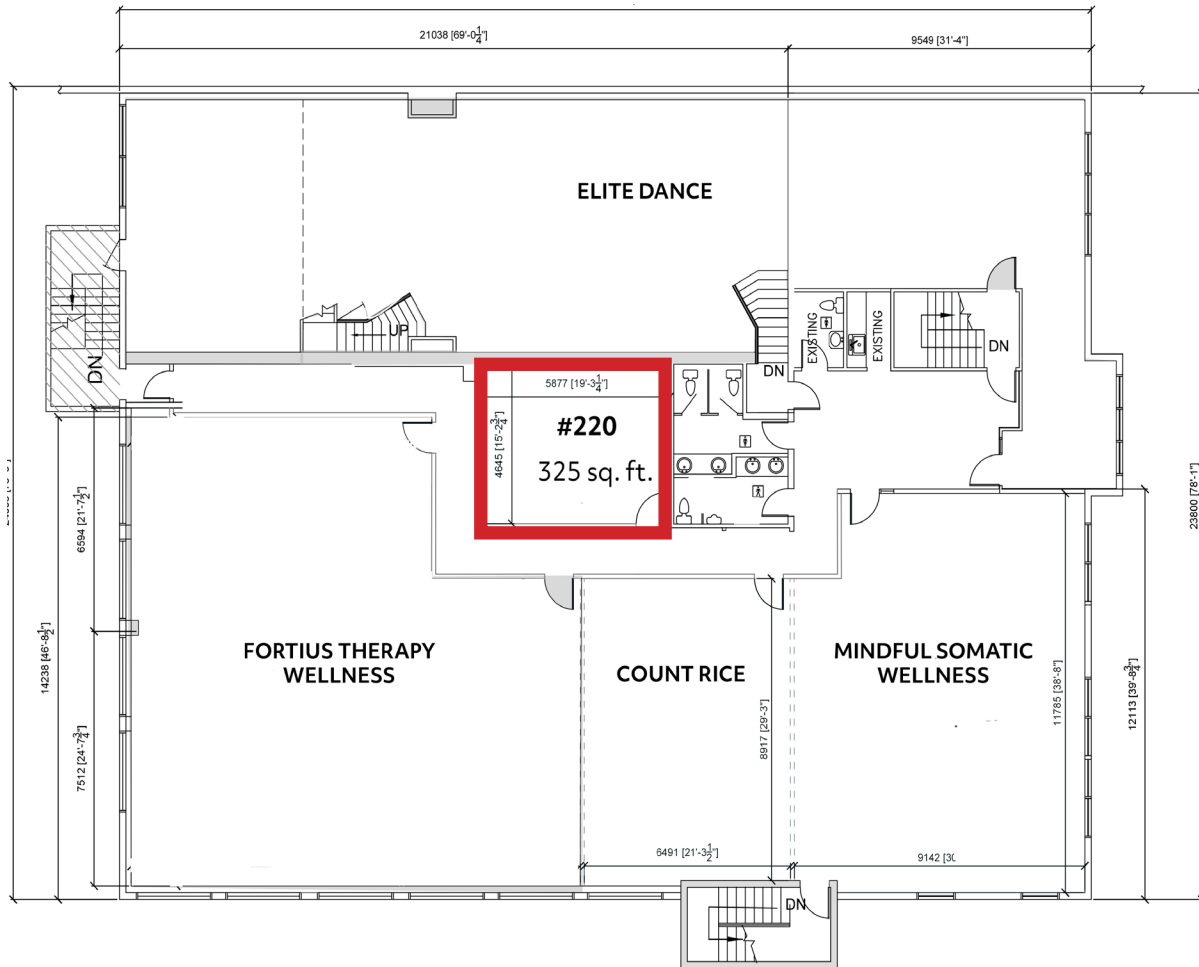




# HORTON ROAD

9715 HORTON ROAD SW

## SECOND FLOOR



Suite #220 - 9715 HORTON ROAD

AVAILABLE AREA	325 sq. ft.
NET MONTHLY RENT	\$435.00 (\$16.00 a sq. ft.)
OPERATING COSTS & PROPERTY TAX	\$7.94 per sq. ft. (est for 2022)
PARKING	1:350 Ratio

Lisa Ha  
403-203-3882  
lisa@telsec.ca

www.Telsec.ca  
TELSEC PROPERTY CORPORATION







# HORTON ROAD

9715 HORTON ROAD SW

## LOCATION



[> VIEW ON GOOGLE MAPS](#)



**Lisa Ha**  
403-203-3882  
lisa@telsec.ca

[www.Telsec.ca](http://www.Telsec.ca)  
**TELSEC PROPERTY CORPORATION**

